

**Lightsource Test Report**

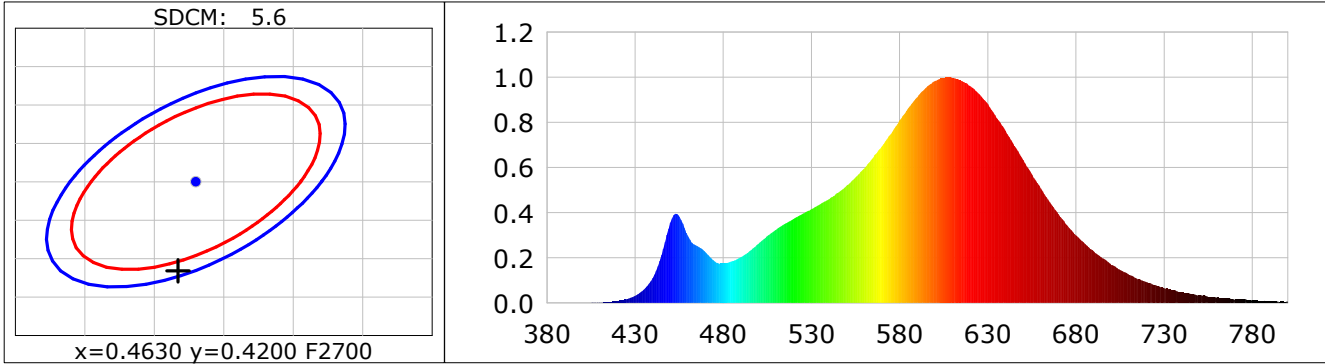
**Product Infomation**

Product Category: LED STRIP  
 Product Spec: BONE 4  
 Manufacturer: TECSOLELED S.L.

Product Type: LED STRIP  
 Product Number: 402  
 Buyer: TECSOLELED S.L.

**CIE Colorimetric Parameters**

Chromaticity coordinates:  $x=0.4617$   $y=0.4084$   $u(u')=0.2647$   $v=0.3512$   $v'=0.5268$   
 CCT:  $T_c=2657K$  ( $duv=-0.00095$ ) Color Ratio:  $R=0.257$   $G=0.720$   $B=0.023$   
 Peak Wavelength: 608.7nm Half Bandwidth: 113.8nm  
 Dominant Wavelength: 584.7nm Color Purity: 0.612  
 CRI:  $R_a=82.8$ ,  $avgR(1\sim14)=78.4$ ,  $avgR(1\sim15)=78.1$  TM30:  $R_f=85$ ,  $R_g=95$   
 GAI:  $GAI\_BB\_8=96.2$ ,  $GAI\_BB\_15=104.5$ ,  $GAI\_EES=45.5$   
 R1 =82 R2 =93 R3 =94 R4 =80 R5 =83 R6 =93 R7 =80 R8 =57  
 R9 =10 R10=85 R11=80 R12=78 R13=85 R14=98 R15=74  
 Color Quality Scale:  $Q_a=82.7$ ,  $Q_f=85.0$ ,  $Q_p=85.0$ ,  $Q_g=90.6$   
 Q1 =78 Q2 =93 Q3 =85 Q4 =81 Q5 =83 Q6 =84 Q7 =83 Q8 =85  
 Q9 =93 Q10=91 Q11=87 Q12=84 Q13=82 Q14=73 Q15=74



**Photometric Parameters**

Luminous Flux: 1274.5 lm Efficiency: 107.05 lm/W Radiant Power: 3.979 W  
 Total mains efficacy: 99.13 lm/W Energy Efficiency Class: F (EU 2019/2015)

**Electric Parameters**

Voltage: 24.000V Current: 0.4961A Power: 11.91W  
 Power Factor: 1.0000 Frequency: 0.00Hz

**Test Infomation**

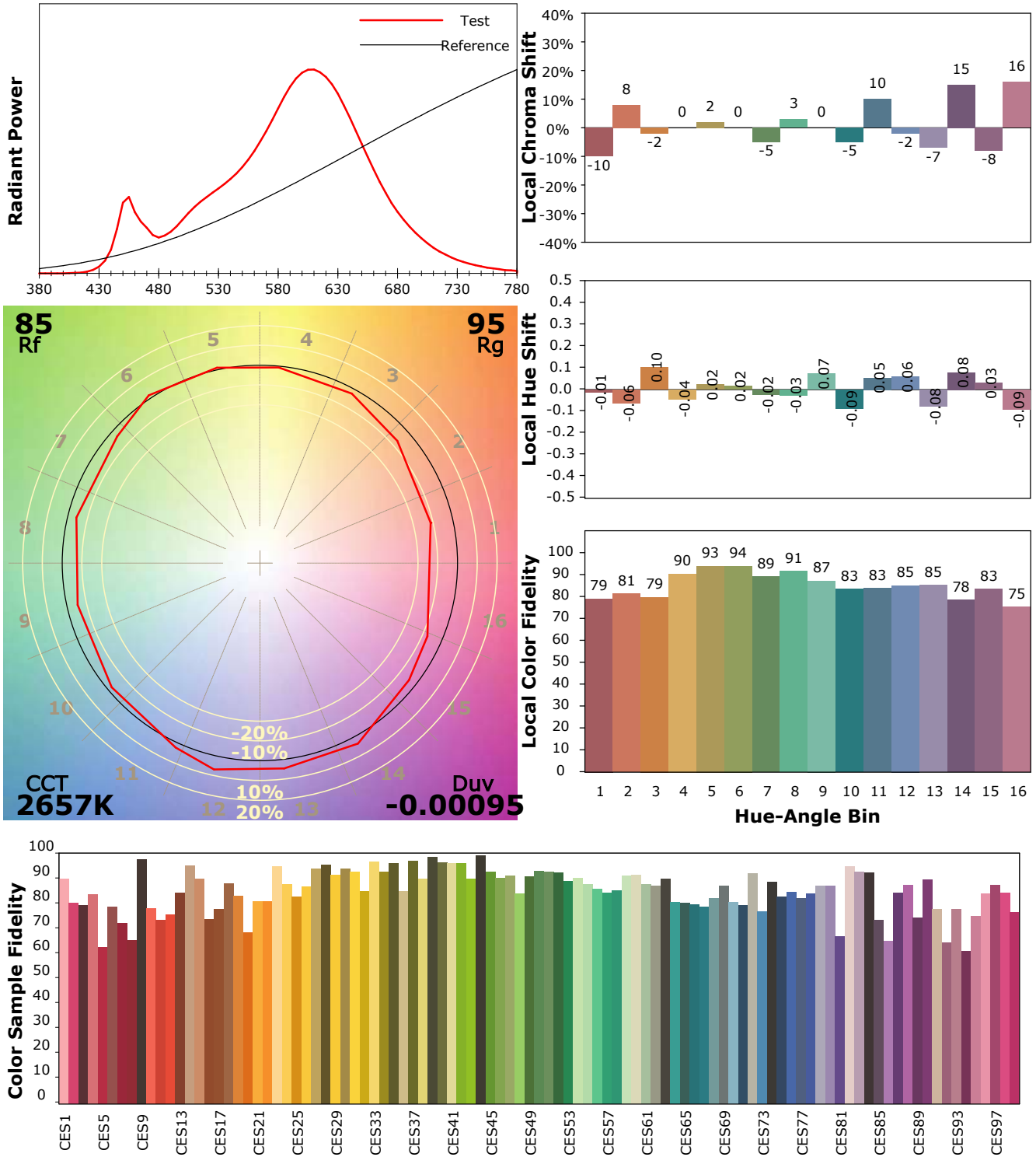
Scan Range: 380~800:1nm Photometric Method: sphere-spectroradiometer  
 Stabilization Time: 0 Sec ALC.: 1.0000 Photometric Condition: Sphere diameter: 1.50m, 4PI  
 Max of Signal: 46137 (2175) CCD Integration Time: 521.74 ms

## IES TM-30-18 Color Rendition Report

**Product Information**

Product Category: LED STRIP  
 Product Spec: BONE 4  
 Manufacturer: TECSOLED S.L.

Product Type: LED STRIP  
 Product Number: 402  
 Buyer: TECSOLED S.L.



Condition: Tx:19.0°C, Ti:17.3°C, R.H.:60%  
 Test Lab: TECSOLED S.L.  
 Operator: JORDAN GIL DIAZ

Test Device: Inventfine CMS-2S (Plus)  
 Test Time: 2021-11-08 16:54:42  
 Inspector: